

{ PROJECT }

HOUSE TAURUS POINT PIPER

{ ARCHITECT }

DURBACH BLOCK JAGGERS



BELLEVARDE

Welcome to Building with Belvarde: Insights.

An exciting project to cover in this special edition.

One of our largest ever residential jobs was recently completed in Point Piper.

The concreting was some of the most complex we have ever undertaken. This was also the most material we've ever air-freighted in for a house. There is stone from Switzerland and Indonesia, metal from France, and timber from Holland.

The steep block presented some challenges but site manager, Lewis Townsend, and the Belvarde team kept everything on track and delivered an excellent result.

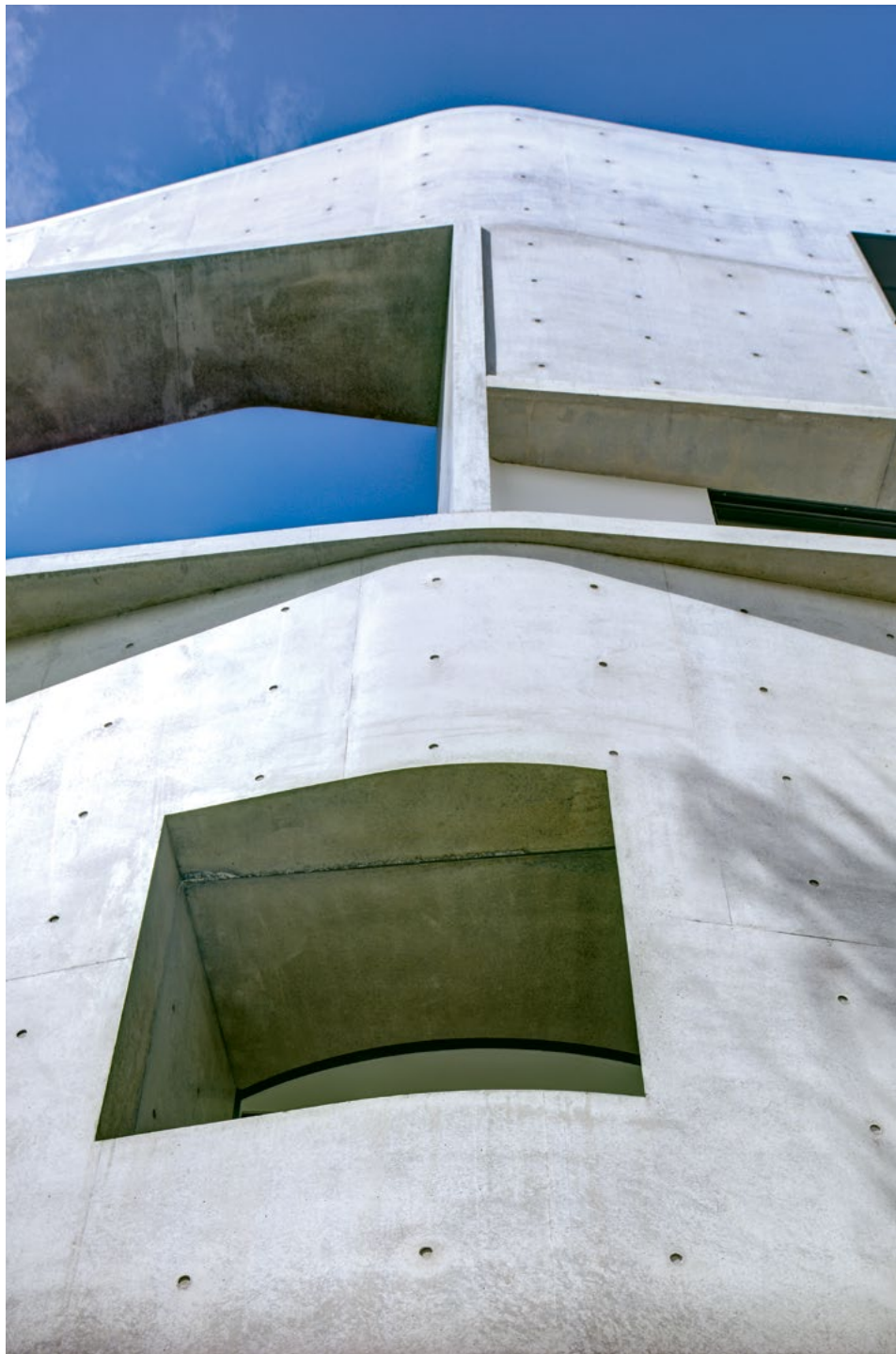
Architect Neil Durbach of Durbach Block Jaggers talks of his experience working with Belvarde.

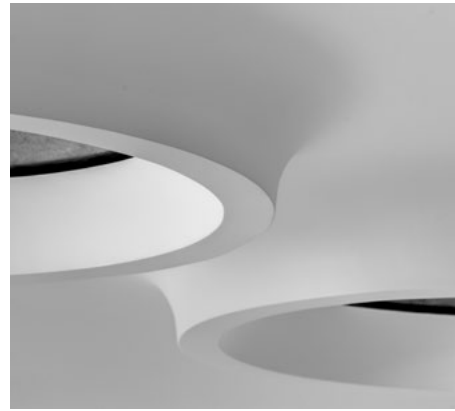
We hope you enjoy this look into what we think is one of Australia's most iconic homes.

As always, we welcome any questions, feedback or opportunities to discuss your next project.

A handwritten signature in black ink, appearing to read 'John Fielding', written in a cursive style.

JOHN FIELDING
AND THE BELLEVARDE TEAM







NEIL DURBACH

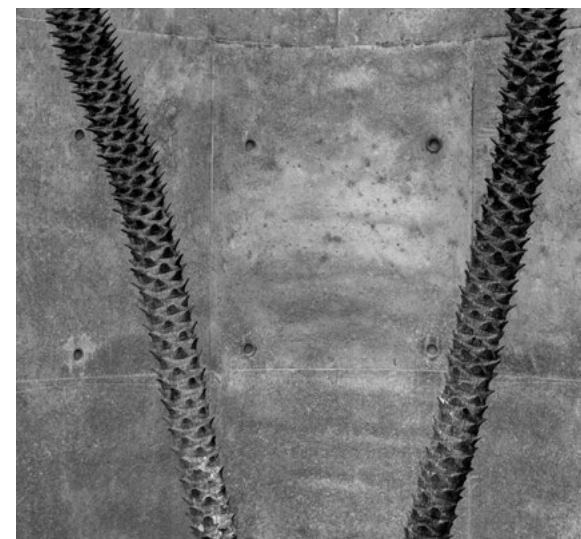
{ Architect }

{6—7}

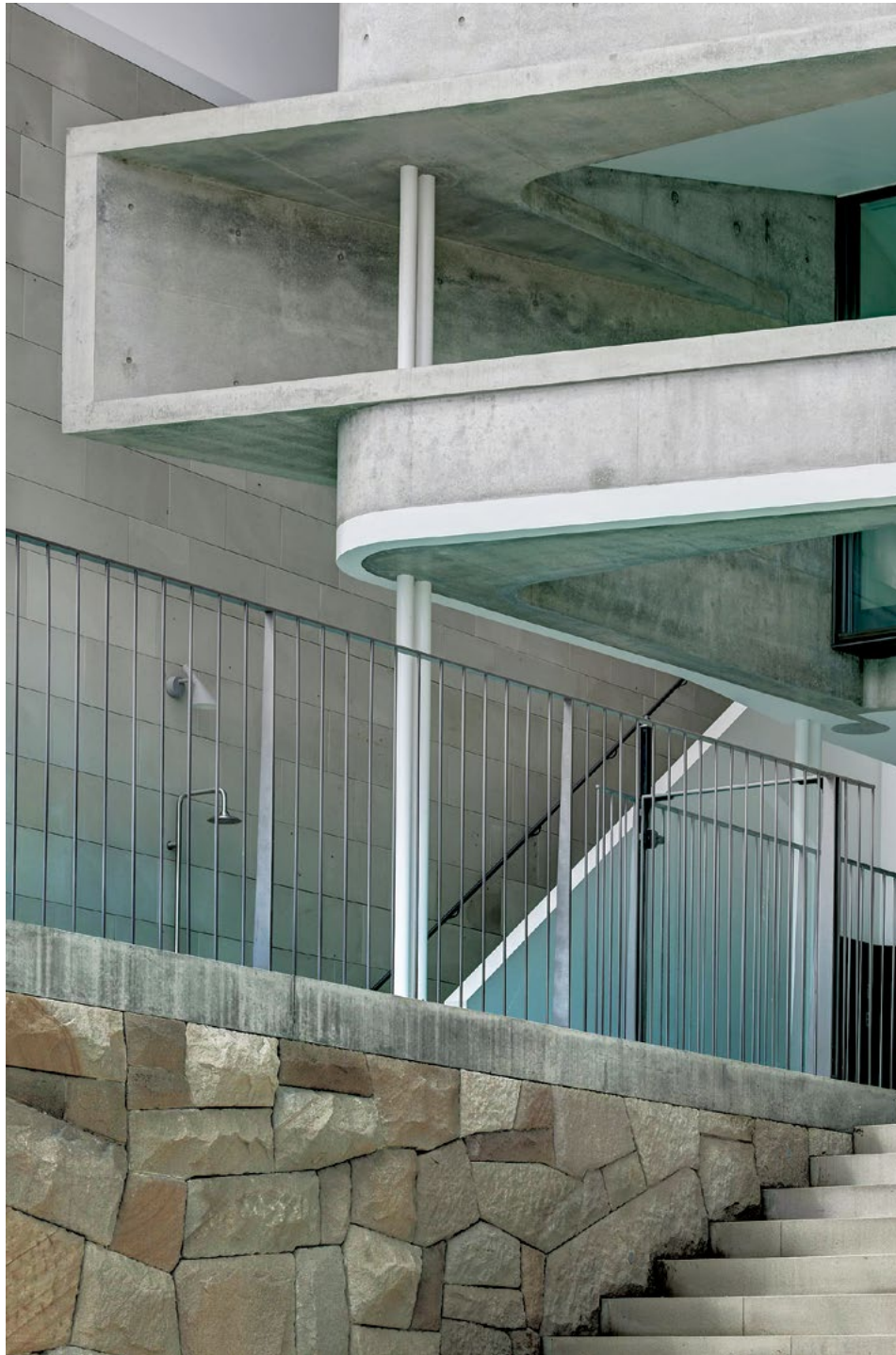
The beautiful thing about concrete is that it's a liquid substance—frozen at a particular moment. Belvarde are the coolest craftspeople to work with—responsive and inventive too. We had no idea that concrete could be so sensuous until they showed us how.

I doubt if there is ever going to be a better concrete house built anywhere ever!!!!







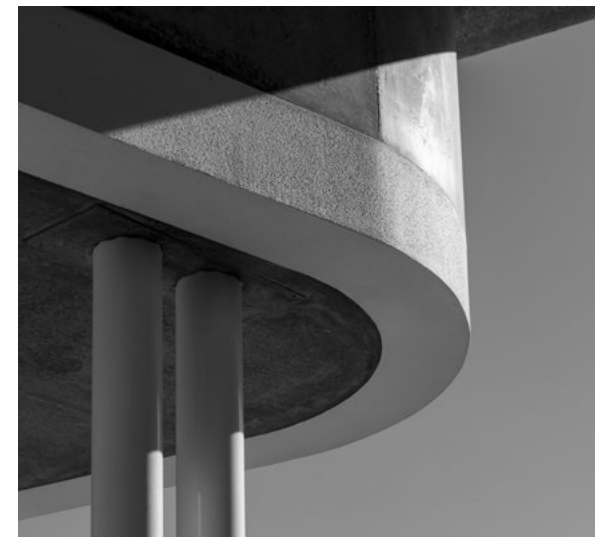


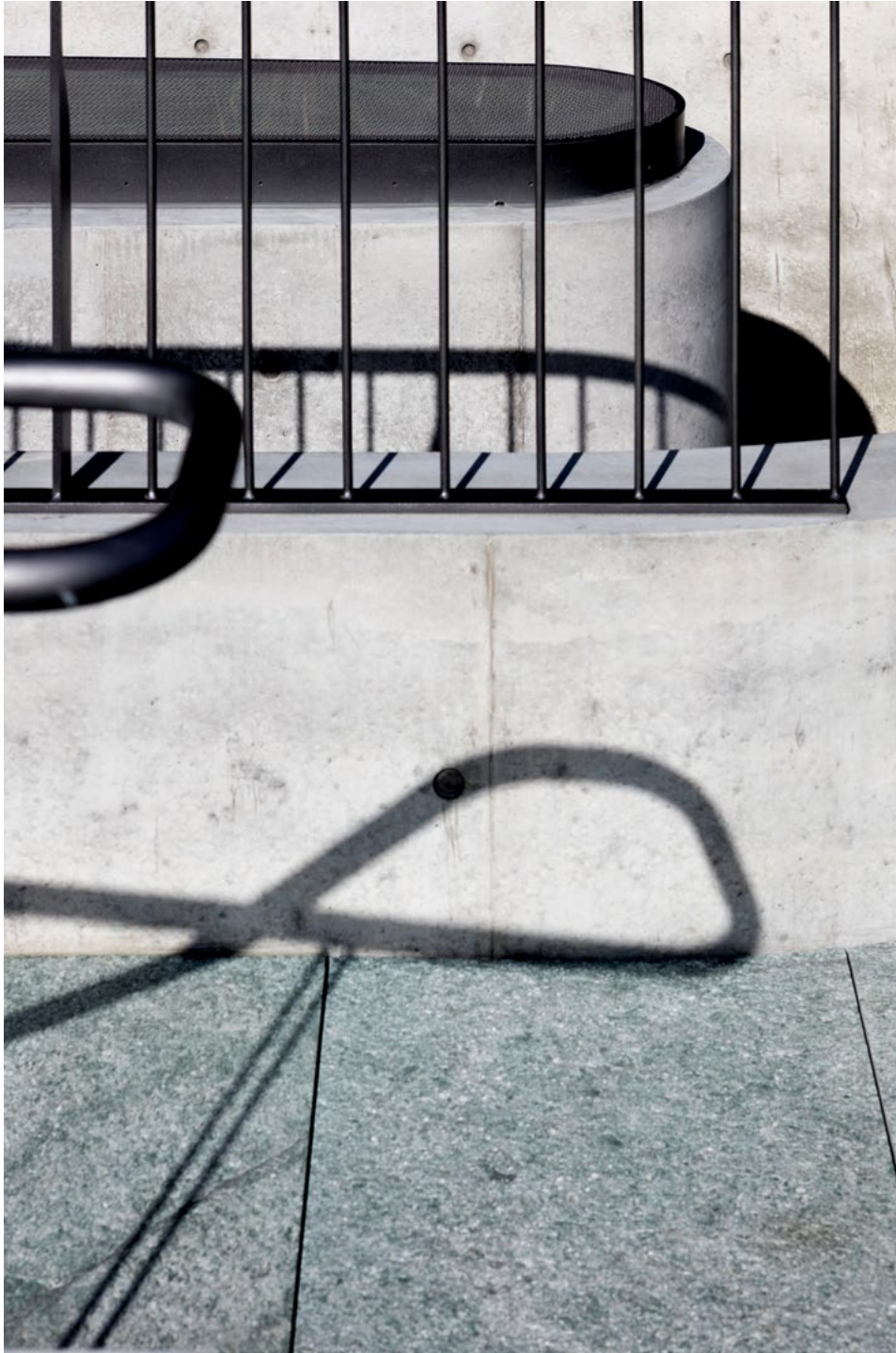
SARAH KIRKHAM

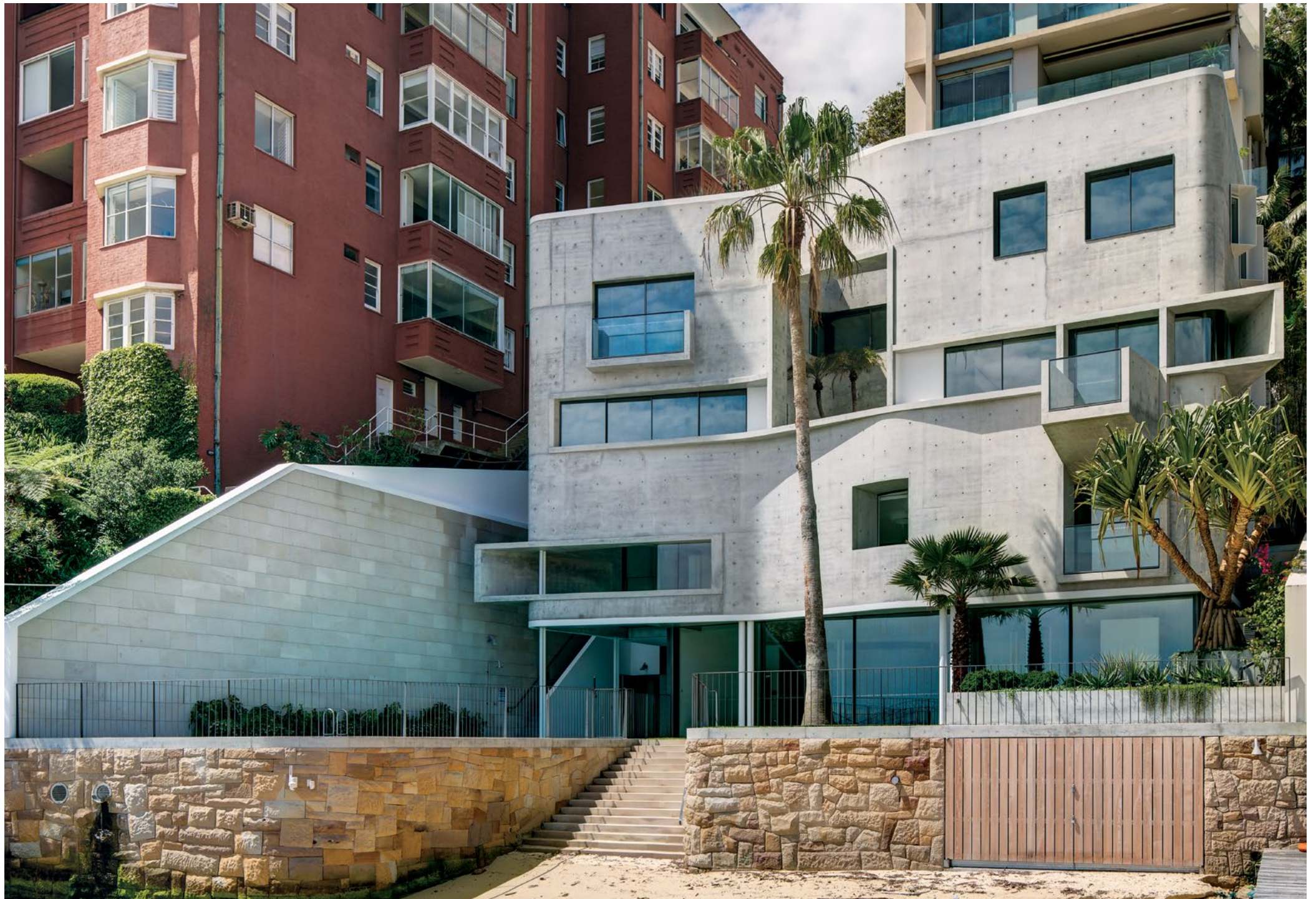
{Architect}

Fantastic result and amazing concrete to which all future buildings will be compared.

{12—13}



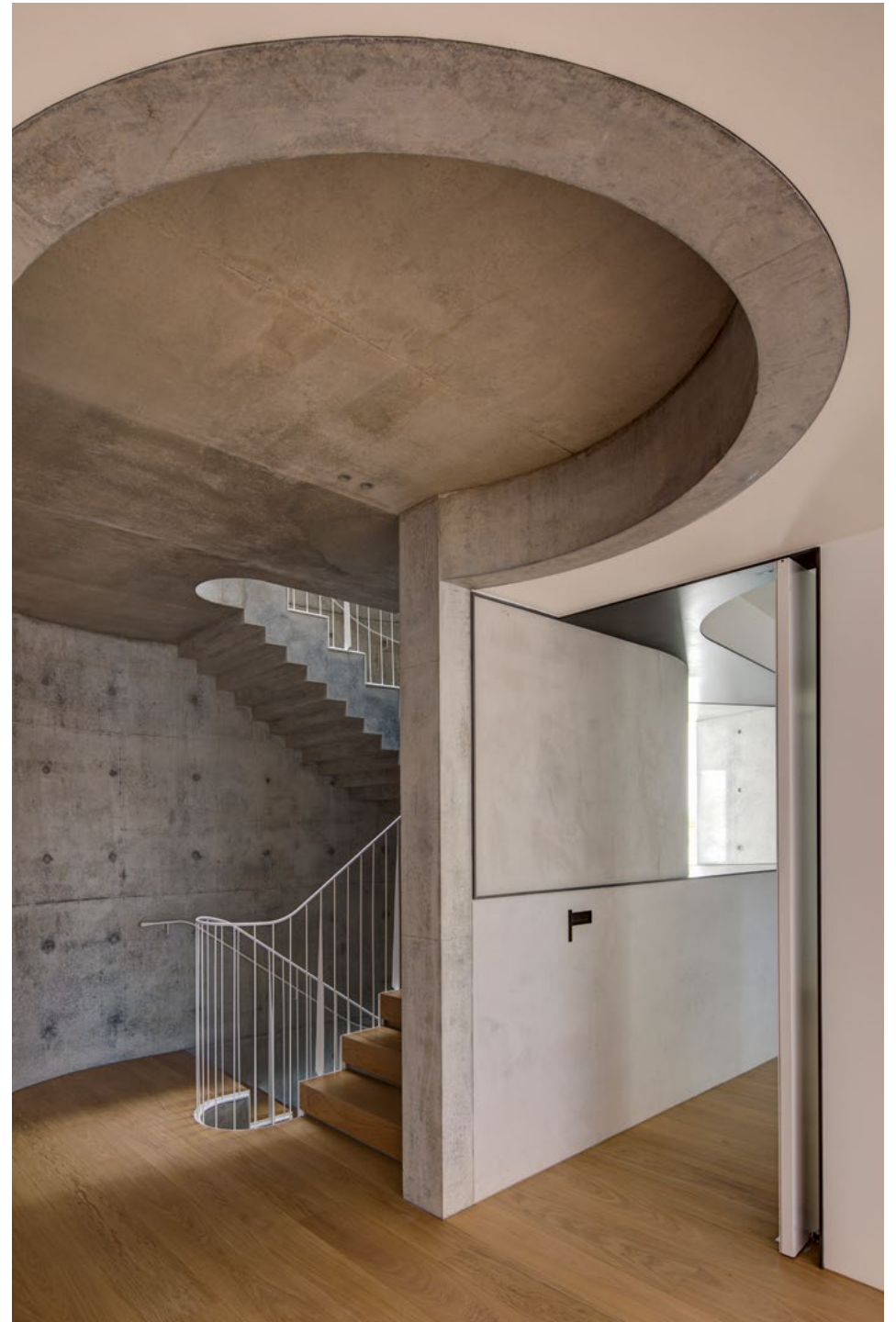


















At Belvedere, we have four principles that have served us well in ensuring we maintain standards across every job.

{First Principle}

FIND THE BEST PEOPLE

It is about searching until we find the people who share our love for building houses as well as they can be built.

That's what Belvedere is—a team of us who just want to build extraordinary houses. It is an attitude that can't be driven or constrained by external factors. It's innate.

{Second Principle}

KEEP ON LEARNING

Everything we have learned in building some of this country's most complex and challenging houses is formalised in our 200 page Belvedere Construction Manual.

It details step-by-step instructions on how best to perform every critical task.

It is on every site and is constantly reviewed and updated as our knowledge grows and as building techniques, materials, equipment, and technologies evolve.

We welcome any questions, feedback or opportunities to discuss your prospective projects.



BELVEDERE CONSTRUCTIONS
SYDNEY CANBERRA THREDBO

PO BOX 4320
MANUKA ACT 2603 AUSTRALIA
TELEPHONE +61 2 6295 2928

BUILDING@BELVEDERE.COM.AU
BELVEDERE.COM

{Third Principle}

FORM A BUILDING TEAM

It takes three key players to make a great house: Owner, Architect and Builder. That is why on each site we form them into a Building Team headed by our site manager.

The trio meets regularly to review, discuss and guide every aspect of the project. This ensures everyone knows just where we are, where we are going next—and ensures that, together, the Team can make the best decisions.

It is the best way to deliver an extraordinary house, of good value, that brings great joy to all of us.

{Fourth Principle}

MAINTAIN THE HOUSE

This came from our owners. They asked us to take care of their houses as well as we built them. So we formed our own specialised Belvedere Maintenance division. It benefits from access to all information on the construction of the house. Plus we can often call on the very tradespeople who built it.

Each new house has its own Maintenance Manager.

According to our owners and architects, we deliver the most efficient and skilled maintenance operation they have ever worked with—indeed several have asked us to take care of other properties we didn't build.

{Construction}

2016—2019

{Interviews}

Hamish Spencer

{Design}

Pidgeon Ward

{Photography}

Brett Boardman
Tom Ferguson
Kien Van-Young

{Paper}

Colorplan
Knight Smooth

{Printing}

Adams Print

